



News from
12d Solutions

The Dirt Digger



Welcome

...to the December 2015 issue of the Dirt Digger. Another exciting edition!

In this issue we will look at:

- **Sales Region of the Year**
- **Making BIM Civil**
- **ePlan and ADAC**
- **12d Synergy update**
- **12d Silver Jubilee Conference 2016**
- **12d Innovation Awards 2016**
- **Dam Break**
- **Can we still get Perpetual Licences?**
- **12d surveyors winning awards**
- **12d Model 11 - have you got it?**

We look forward to hearing any feedback or news you might have.

Regards

Dr Lee Gregory
Managing Director

Alan Gray
Technical Director



We've made it easier for our customers to manage their email, data and electronic documents! We offer:

- Free installation assistance - Install can be as short as 30 minutes
- Free introductory training - Administration and end-user training
- Free telephone support - Yes, you can talk to a real person
- Access to the 12d Synergy support portal - Connect with your peers and our programmers
- End-User documentation and configuration guide - We give you suggestions on how to get productive sooner
- Generous payment terms - Interest free payment terms to help with the cash flow
- Tiered pricing structure and volume discounts - Our pricing accommodates companies from as few as 4 users to over 100
- Input into product development - We listen to our customers. Very few companies can make the same claim. Read the testimonials and case studies.
- Quick turnaround on support - We acknowledge all requests for support and provide guidance on when issues will be resolved

Email sales@12dSynergy.com and we will come to see you.

Watch out for our 12d Synergy webinars. **Does it get any easier?**

Sales Region of the Year

The numbers are in — and it is congratulations to Extra Dimension Solutions (ExDS) as the top 12d Model reseller for Financial Year 2014/2015.

The energetic ExDS team look after the 12d Model sales, support and training in NSW, ACT & SA, and are now an authorised 12d Synergy reseller.

Despite the severe mining downturn in Australia, financial Year 2014/2015 was another successful sales year for 12d Model sales. So thank you to all our users.

Can We Still get Perpetual Licences? Definitely YES

We have received many enquiries worrying that we may be stopping Perpetual Licences and in future force our users to only purchase Subscriptions.

Perpetual Licences are where a user pays a once off fee, and then has on going access to the software at no additional cost. This is the most cost effective option for most users.

Subscription, the new marketing name for Rental, has no up front fee but instead has an ongoing monthly cost. Stop paying and access to the software stops. Subscriptions have always been available to 12d Model users and will continue to be offered.

But be assured, as it has done for the past 25 years, 12d will continue to offer all our users the choice of either Perpetual licences or Subscriptions, or both.

Holiday Season Closure

The 12d Solutions Head office in Sydney will be closed from lunch time on Wednesday 23rd December 2015 until the morning of Monday 4th January 2016. Enquiries during this time should be made on info@12d.com.

Have a wonderful and safe holiday season. We look forward to dealing with you again in 2016.

12d® Model
Do more with your software

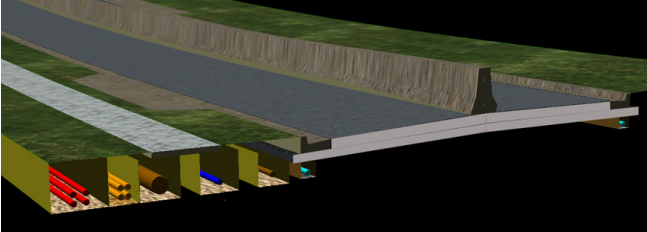


Making BIM Civil

The Civil industry never stands still!

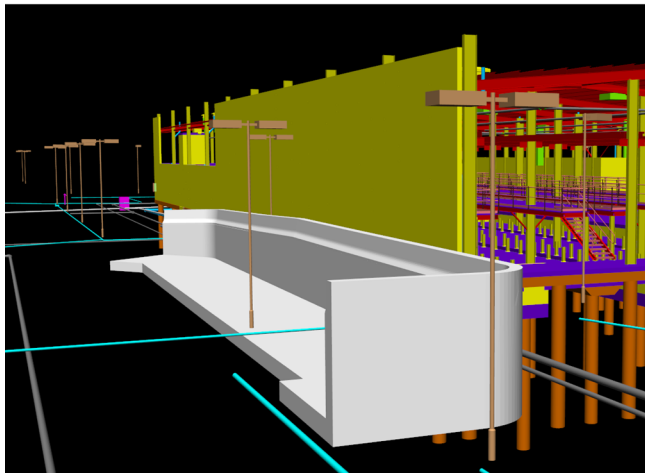
Years ago only alignments and cross sections were used for design. Next string design was introduced to model the complex geometries that cross sections couldn't handle.

Then eighteen months ago in 12d Model 11, 12d led the world in introducing Civil solids in the form of intelligent trimeshes to model the remaining 3D Civil objects such as pavement layers, tunnels, mines, caves, kerbs, etc. that a full Civil BIM requires.



Now using the International Open BIM interchange format, IFC's, all the data in 12d Model including attributes, super strings, tins, drainage and sewer networks and trimeshes, can be written out for seamless transfer to other BIM packages.

Simultaneously 12d Model 11 uses trimeshes to capture data from Architecture packages, and by using the power of 12d Model this localised data can be transformed so that it accurately fits in with civil data in real world coordinates such as MGA.



This revolutionary approach means that 12d Model can display, perform clash detection, set out for construction and do conformance checks, for data in projects ranging from building sites that cover hundreds of square metres, to roads, rail and other linear structures that extend over tens or hundreds of kilometres.

Using their unique knowledge, 12d Solutions has worked on the Precinct Information Modelling project as part of the CRC for Low Carbon Living. And as a founding member of the Open BIM Alliance, 12d Solutions is also involved in the BuildingSMART development of the coming IFC's and Civil BIM standards for Alignments, Roads, Rail, Bridges and Tunnels.

ADAC & ePlan in 12d Model

2015 has been a big year for the IPWEA standard **ADAC** (Asset Design and As Constructed) as the number of Australian Councils and Water Authorities requiring ADAC XML files as part of the project deliverable has increased dramatically.

12d Model 11, with its comprehensive ADAC solution, is being widely used to produce ADAC XML data from designs and/or surveys. To bring you up to speed with 12d-ADAC, public and in-house half day Introductory and Advanced 12d-ADAC courses are now available. Contact training@12d.com

ePlan, the new Australian standard for XML submission of Cadastral plans, is currently being introduced in New South Wales, Queensland and Victoria. 12d has held 12d-ePlan training courses with each of the relevant State departments to ensure that the 12d-ePlan solution is the best possible.

12d Model users have already submitted ePlans in NSW with users in Queensland and Victoria not far behind.

12d Surveyors Win Awards

Congratulations to Melissa O'Brien who won the NZIS Bogle Young Surveyor of the Year award for 2015.

The award, which was presented to Melissa at the NZIS Conference by Dr Lee Gregory, acknowledges the great achievements that young surveyors are making.

Melissa joins 12d users Matt Ryder, the 2014 Bogle Award winner, and Andrew Perry and Todd Airy who were recipients in previous years.

Megan Dillon, who won the SSSI Queensland Young Professional of the Year in 2014, has gone on to pass her Registration exams and is now the 7th female to be a Registered Surveyor in Queensland.

Subsurface Utility Information

There is a new Australasian standard AS5488 for the Classification of Subsurface Utility Information (SUI). The standard provides a framework for the classification of subsurface utility location and information in terms of specified Quality levels. For a located utility, there can be varying levels of Quality and attributes at each vertex and segment, of the string.

12d Model is unique in having string, vertex and segment attributes and so is ideally suited for capturing all SUI data.

Stay tuned for further SUI developments within 12d Model.

Do you have 12d Model 11?

12d Model 11 has now been shipped to all customers on Maintenance. If you haven't received your package, please contact your local 12d Model Sales team.

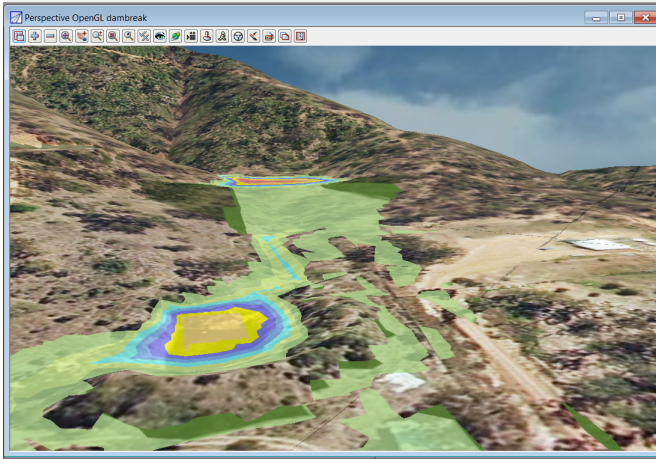
Contact training@12d.com for information on public and in-house 12d Model 11 Upgrade courses.



Dam Break

Simulating the effects of dam breaks is an essential part of civil engineering projects around the world and 12d Model, working with TUFLOW, are world leaders in this area.

12d Model has all the tools to create the ground surface model, the TUFLOW grid and time dependent elevation break lines. These are fed into the 12d-TUFLOW engine to produce the resulting water levels. The time dependent elevation breaklines model the dam failure.



In this [12d Model movie](#), the centre of the dam collapses and the resulting flood wave with depth colouring is shown.

The 12d Model visualisation of the results enables the modeller and stake holders to see the rate of dam failure, the resulting inundation and the speed of the flood wave which is needed for evacuation planning.

12d Silver Jubilee Conference 2016

It is hard to believe, but 12d Model turns twenty five next year!

To celebrate this, the 12d Conference in 2016 will mark our Silver Jubilee.

The 12d International User Conference is being held on **Sunday 24, Monday 25 and Tuesday 26 July 2016**, in the Grey Street section of the **Brisbane Convention and Exhibition Centre**.

At this Conference we will be highlighting all the new features in 12d Model 12, 12d Synergy 3 and much more. There will again be breakout sessions on Design, Surveying, Water and Drainage, and 12d Synergy. So register today by clicking [here](#)

Call for User Papers

We are now accepting papers from users who would like to speak about their 12d Model or 12d Synergy work at the Conference. We have slots for User papers of different lengths (10, 15 or 20 minutes). If you are interested in presenting a paper at the 2016 Conference, please email 12d on conference@12d.com

Note Videos from the 12d User Conference 2014 can be viewed [here](#).

Innovation Awards 2016 - \$15,000 in Prizes

Due to the overwhelming success of the previous 12d Innovation Awards, we will again be running these Awards in 2016, with the prizes to be presented at the 12d International User Conference 2016 Dinner.

This time there are **five** separate categories: Design and Visualisation; Surveying and Construction; Drainage, Sewer, Water and Utilities; Customisation; and 12d Synergy. Certificates are also presented for small firms, large companies and government.

So get your thinking caps on as we'll be sending out more information and starting to accept entries very soon!

Sales and Support

NSW, ACT & SA
Extra Dimensions Solutions
support@exds.com.au
Ph. (02) 9452 6771 (Sales)
(02) 9453 9449 (Support)

WA - Design
12d WA
wa.sales@12d.com
Ph. 0411 601 066 (Sales)
wa.support@12d.com
(08) 9574 6816 (Support)

WA - Survey
12d Solutions
graham.wirth@12d.com
Ph. (02) 9970 7117 (Sales & Support)

VIC & TAS
12d Victoria
vic.sales@12d.com
vic.support@12d.com
Ph. (03) 9005 7626 (Sales & Support)

QLD & NT
12d Queensland
qld.sales@12d.com
Ph. (02) 9970 7117(Sales)
(07) 3040 7880 (Support)

UK, EUROPE, MIDDLE EAST & AFRICA
12d UK
sales@12d.co.uk
support@12d.co.uk
Ph. +44 (0) 845 051 0372 (Sales & Support)

NEW ZEALAND
12d NZ
lane@12d.co.nz
Ph. +64 27 477 7787 (Sales)
+64 4 564 3288 (Support)

ASIA
12d
soon.teh@12d.com

AMERICAS
12d Canada
mark.poynter@12d.com
Ph. +1 877 232 3062

FIJI
Lukemine Enterprises
lukemine@connect.com.fj
Ph. +679 337 0858 (Sales)

OTHER REGIONS
12d Solutions
info@12d.com



Welcome aboard to our new 12d Model licences and upgrades from ...

AAM Group - WA	GHD - Qld, Vic	Precision Survey Group Pty Ltd - NSW	NSW
Acor Consultants Ltd - NSW	GM-CCS - Qld	Pritchard Francis Pty Ltd - WA	UDP Consulting Engineers - Qld
Adamson Shaw Ltd - NZ	Greenhaven Projects - Qld	Probuild Civil (QLD) - Qld	URS - NSW, Qld
AECOM - NSW, Qld, WA	Halls Fripp Surveying - Qld	PT Energi Batubara Lestari - Indonesia	Vassallo Constructions - Qld
Allroads - Qld	Hard and Forester - NSW	PT Kitadin Tandung Mayang - Indonesia	VDM Pty Ltd - Qld
Alluvium Consulting - Qld	Harrison Grierson - Qld; NZ	PT Pama Persada Nusantara - Indonesia	VFT Engineering Surveyors Pty Ltd - NSW
Arcadis - Qld, NSW	Higgins Contractors - NZ	PT Tambang Batubara Bukit Asam - Indonesia	Water Technology - Vic
Aurecon Group - Qld; NZ	Harrison Infrastructure Group Pty Ltd - Qld	Public Transport Authority - WA	Wellington Shire Council - Vic
Ausenco - Qld	HMA Surveying - NSW	Queensland Department of Transport and Main Roads - Qld	Whelans Survey and Mapping Group Pty Ltd - WA
Auspat Australia - NSW, Qld	Hutch Engineering Surveys - Qld	Queensland Rail - Qld	Wilson Survey Group - Qld
Barlow Shelley Consulting Engineers - Qld	Hyder Consulting Middle East Ltd	Queensland Surveying Solutions - Qld	Wood and Grieve - WA
BCL Surveyors - NZ	Ian Lambert Surveyors - NSW	Resource Development Group - WA	Wood & Partners Ltd - NZ
Beca - Vic; NZ	Irwinconsult - Vic	Reyburn and Bryant - NZ	Woodbury Haulage and Earthmoving - NSW
Bennett and Bennett - Qld	Jacobs - NSW, Qld, SA, Vic, WA; NZ	Riley Consultants - NZ	WorleyParsons - WA, Qld, Vic
Beveridge Williams - Vic	Kellogg Brown and Root - Qld, WA	Rio Tinto - WA	WRM Water and Environment - Qld
BG & E Consulting Engineers Pty Ltd - Qld, WA	KN Group - Qld	Rivland Surveyors - NSW	Xstrata Coal - Qld
BGC Contracting Pty Ltd - WA	KTW Enterprise - Malaysia	RMA Consulting Engineers - Qld	Zorn Surveying - NZ
BMD Group - Qld	Land and Marine Surveying - NZ	Robert Bird Group - Qld	
Boite Civil Pty Ltd - NSW	Land Information New Zealand - NZ	Royal Thai Army - Thailand	
Bouygues Travaux Publics - NSW	Land Surveys No Problems Just Solutions Pty Ltd - Qld, WA	RPC Ltd - NZ	
Brandon & Associates - Qld	LCJ Engineers - Qld	RPS - Qld	
Breese Pitt Dixon - Vic	Lend Lease - NSW, Qld, Vic	Schlencker Surveying - Qld	
Bundaberg Regional Council - Qld	Leighton Contractors - NSW, Qld, WA; NZ	SCIRT - NZ	
Burrett & Associates - NZ	Lynton Surveys - NSW	Sedgman Consulting - Qld	
Calder Harris Surveyors - SA	Lysaght Consultants - NZ	SEE Civil Pty Ltd - NSW	
Calibre Consulting (Aust) - Qld, WA	McDowall Affleck - WA	Seymour Whyte - Qld	
Calibre Consulting Ltd - NZ	McMurtrie & Associates - Qld	Shadforths Civil Contractors - Qld	
Candor3 - NZ	Meinhardt - Vic	SKS Surveys - SA	
Cardno - NSW, Qld, Vic, WA; NZ	Millar Merrigan - Vic	SMEC - ACT, NSW, Qld, Vic; Hong Kong	
Cato Bolam Consultants - NZ	MinStaff Survey Pty Ltd - Qld	Stamm Surveys - NZ	
Cheal Consultants - NZ	MJR Industries Group - NSW	Stewart Group Ltd - NZ	
CivilScope Surveying - NSW	Monteath and Powys - NSW	STP Consultants - Qld	
Cossill and Webley - WA	Mortons Urban Solutions - Qld	Sunshine Coast Regional Council - Qld	
Cuttriss Consultants - NZ	MPA Surveying - Qld	Sunshine Coast Survey and Planning - Qld	
Dalton Consulting Engineers - Vic	MPN Consulting - Qld	Survey Dynamics - WA	
Daracon Group - NSW	Multi Surveying - NSW	Survey Group - WA	
Davie Lovell Smith Ltd - NZ	MWH New Zealand - NZ	Taylor Thomson Whitting - NSW	
De Nada Engineering Surveys - WA	National Airports Corporation - PNG	Taylor - Vic	
Detail Survey - ACT	Nexus Surveys - WA	Terraco - Vic	
Dougherty Surveys - NSW	Opus - Qld, NSW; NZ	TGM Group - Vic	
Downer EDi Works - NZ	Osborn Lane Consulting Engineers - Qld	The LandPlan Group - Vic	
Downes Survey Group - Qld	Ostwald Bros Civil Pty Ltd - Qld	The Surveying Company - NZ	
DPTI - SA	Owen Roberts Surveying - Qld	Thiess - NSW	
Dubbo City Council - NSW	Pacific Survey - NSW	TMM Group - Qld	
EirEng Consulting Engineers Ltd - Ireland	Paroissien Grant & Associates - Vic	Tomlinson and Carruthers	
Eliot Sinclair & Partners - NZ	Parsons Brinckerhoff - NSW, Qld, Vic	SSA Consultants - Thailand	
Empire Engineering - Qld	Paterson Pitts Partners - NZ	Surveyors Ltd - NZ	
Engineering Surveys - SA	Paul Smith Earthmoving - NZ	Tonkin and Taylor Group Ltd - NZ	
Envirocon - NSW	PDC Design - WA	Toowoomba Regional Council - Qld	
Ertech - WA	Pirie Surveying - NZ	TRN Group - NSW	
ESO Surveyors - NSW	Pitt and Sherry - Vic	TSS Total Surveying Solutions -	
Forbes-Brown Civil Limited - NZ	Positive Survey Solutions - NSW		
Fulton Hogan - Qld	Precision Enterprises - WA		
Fyfe - SA			
GEO Image Services - NSW			
Geo-Metric Surveying Pty Ltd - NSW, Qld			
George Bourne & Associates - NT			

And from little acorns,
great trees grow -

Welcome aboard to
our new 12d Synergy
licences and upgrades
from ...

AECOM - Qld
Aurecon - Qld
Bennett and Bennett - Qld
Bland & Jackson Surveyors - NZ
Bouygues Construction - NSW
Bruce Alexander Surveyors - NZ
Buckton Consultant - NZ
Candor3 - NZ
Cardno - NZ
Cheal - NZ
Clark Land Surveyors - NZ
Cogswell - NZ
Eliot Sinclair - NZ
Engineering Solutions - Qld
Gateway Survey & Planning - Qld
Good Earth Matters - NZ
GPR Consulting - Vic
J Wyndham Prince - NSW
LD Eng - Vic
NTGA - NZ
Mainland - NZ
McKay Knarston - NZ
RCS - Qld
RPC - NZ
Southern Land - NZ
WSP Parsons Brinckerhoff - Qld

