



12d® Model Case Study

Jebel Hafeet Glacier Development (Al Ain - UAE)

Designer: Mony P Mathew
Client: Tamouh
Location: Jebel Hafeet Glacier Development - Al Ain, UAE
Completion Date: 2010

“The Surf Pool will generate waves to a height of 10 feet with a number of different wave patterns being offered.”

Outline:

The Rafting Courses and Surf Pool are the first project components being built by Tamouh Investments, PLC and will form the first phase of their major integrated development on this site.

General:

A number of similar White water Rafting facilities have been built elsewhere in the world, normally to meet Olympic Games kayaking and canoeing event requirements.

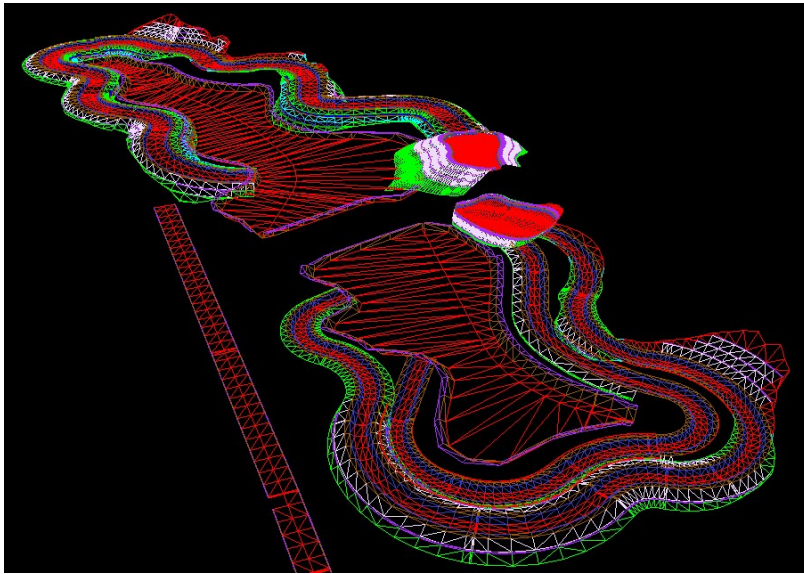
One or two large surfing Wave Pools have been built elsewhere, but this one will generate some of the highest man made waves in the World.

As well as a commercially based white water rafting facility, it is envisaged that the facilities will encourage the growth of competitive kayak and canoe paddling in the Middle East thereby providing nation building, sporting and recreational facilities of the highest possible standard.

In general, the facilities will have a positive impact on the Jebel Hafeet tourist and visitor profile and assist in further establishing Al Ain as an international tourist destination.

The Project

The project at Jebel Hafeet will comprise ‘White Water Rafting Facilities’ and a large Surf Pool, plus required support buildings. The Surf Pool will generate waves to a height of 10 feet with a number of different wave patterns being offered.



“There will be two conveyors to take craft to the top of the runs. One will service the black run and the other both the Green and Blue courses. All three courses will be suitable for rafts or kayaks.”

White Water Rafting Courses

There will be three courses:-

Green Run - An easier, beginners course, about 375m long

Blue Run - An intermediate course, also about 270m long

Black Run - An advanced course potentially meeting Olympic requirements some 488m long

Total length of runs 1,133 meters

There will be two conveyors to take craft to the top of the runs. One will service the black run and the other both the Green and Blue courses. All three courses will be suitable for rafts or kayaks.

Two large lakes will provide the water to operate the runs; these are approximately 2m deep and are sized at 10,058 s/m for Lake 1 and 6,249 s/m for Lake 2, totalling 16,307 s/m.

A connection pipe will enable the water to be transferred from one lake to the other in case this is ever required.

Water in the lakes will be maintained at a high quality by a water treatment plant located under the pond that is the starting point for the black run.

Surf Pool

The surf pool will cover an area of approximately 6,000 s/m and be 2.5m deep at the deepest end.

The beach area will be some 70m long.

The wave machinery will be capable of operating two separate systems – a hydraulic system capable of generating surfing waves up to a height of 3.2 meters and a pneumatic system capable of generating a number of smaller waves and different patterns more suited to the family market.

Buildings

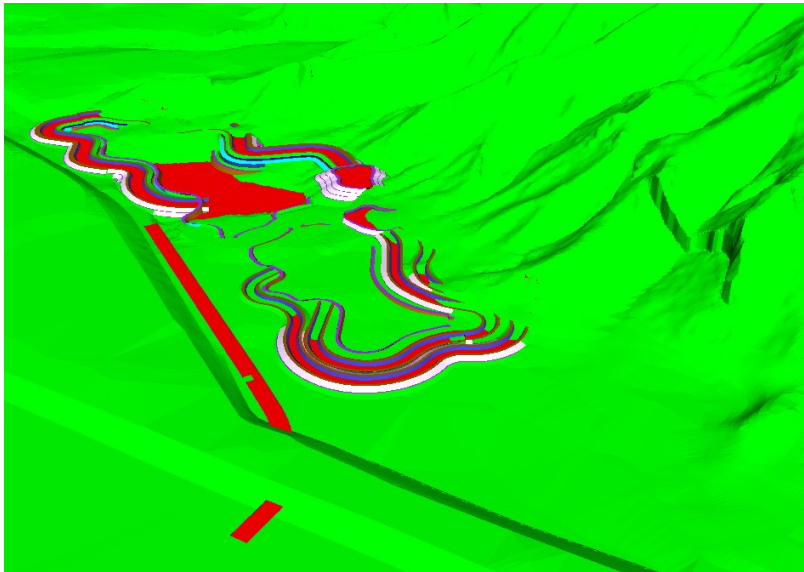
The following buildings will be constructed:-

Public Facilities

Building 1 - Entry Building – This will provide ticketing and retail space

Building 2 - Restaurant - This is the only two storey building on site

Building 3 - Staff Office and Equipment Rental Building



“The project Jebel Hafeet White Water Rafting Facility is located approximately 22 kilometers from Al Ain city center near Green Mubazara...”

Building 4 - Guest changing rooms, showers and toilets.

Building 5 - White water rafting operations building, contains hire craft, briefing area and staff room

Service Buildings

Building 6 - Security and storage area – A back of house building

Building 7 - Workshop and drinks area for surf pool guests

Building 8 - Sub stations (3 in number)

Other - Plant and pump rooms

Area & Location

The project Jebel Hafeet White Water Rafting Facility is located approximately 22 kilometers from Al Ain city center near Green Mubazara. The total site area is 130857 square metres.

